

The Kiess Release

Continuing Education Seminars-

Ever wonder why we host so many continuing education seminars? We are fortunate that many of the companies related to the dental industry work with us to bring in great speakers and ask that we help provide an educational program that will benefit Dentists and staff members on a variety of subjects in the dental world.

Here is a lineup of programs scheduled in the next few months:

- **Friday, Nov 4th, 2011-“Interdisciplinary Management of Dento-gingival Esthetics and Maintenance of Dental Implants: Techniques, Indications, Evidence”**. For Dentists and Dental Hygienists. 1PM to 4 PM At the Hilton Omaha at 1001 Cass Street
- **Friday, December 9, 2011- “Scientific Advancements for Endodontic Success”** presented by Dr. Frank Cervone, 9Am to 5 PM at Kiess Kraft. Sponsored by Tulsa Dental.
- **Friday, December 16, 2011—”Simplifying Advanced Implant Restorations”** presented by Barry Goldenberg DMD. MS. 8:30AM to 4PM at Kiess Kraft. Includes hands-on training. Plan on attending! Call Kiess Kraft to register—no fee!
- There are other evening meetings scheduled on various topics. Watch for info.

Follow CE programs on our website: www.kiesskraft.com
All seminars sponsored by Kiess Kraft will have CE credits applied for in Nebraska and Iowa as well as states other attendees are from. Kiess Kraft is a PACE provider.



Approved PACE Program Provider FAGD/MAGD Credit
Approval does not imply acceptance by a
state or provincial board of dentistry or AGD endorsement.
6/30/2010 to 6/29/2014

What Makes Prescribing Restorations Easier? Complete or Flat Fee Pricing!!!

It's always easier to know what to charge your patients for a restoration(s) when you are aware of your costs ahead of time. We have developed “complete pricing” for removables and for implants. Both of those areas always seems to have many steps that are charged separately.



Easy
makes
us
smile!



With the “complete pricing” you will know up front what your cost will be. Kiess Kraft has determined what is a “fair and complete” price for dentures, partials, and implants. Crowns and bridges generally have just a single charge, with the SP or hi noble metals usually being the only additional charge.

Please call Kiess Kraft to have the “complete pricing” information sent to your office. Lets make it easier for everyone!

The beauty of fall
is here...
But someday
we feel like the
barn!



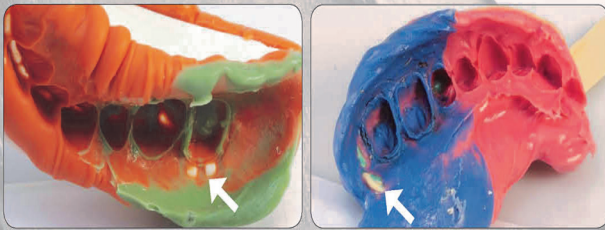
Impression Taking and Temporization- Dr. Len Boksman's Published Articles are available.

Impression taking is obviously an important part of every dentist's day. Dr. Boksman, through his articles, helps create an understanding of what may affect the ideal outcome of a restoration and the variables that influence impression taking.

Remakes and Retakes. What Gives?

Many of the trays we process for dual-arch impressions are plastic. Their popularity probably has a lot to do with price. Unfortunately, plastic is elastic, so we see a lot of inaccuracies caused by deformation and flexing of these trays during insertion and removal, and during pouring up of the model.

The forces causing the distortions of the tray are difficult, if not impossible, to see when they are occurring or after polymerization - each time the patient swallows for instance, the lingual flange shifts, axial roll (torsion) occurs with palatal impingement, and retro molar pad impingement flexes the tray. The results are what we see everyday and the reason so much time (and money) is wasted on retakes and remakes.



Selecting the right tray and the right impression material matched to the technique will eliminate costly retakes and remakes. If you are unsure what the strain in compression of your impression material is, or how these variables can affect the final outcome,

A supporting article "Dual-Arch Impressions" by Dr. Len Boksman, is available upon request.

It will make a significant difference to your impressing techniques and your bottom line.

Dr. Len Boksman's articles are informative for the entire staff. Dr. Boksman has been involved with research throughout his dental career and has been published in many dental journals. He wants to share this information with Dentists and staff members to help make impression-taking more accurate and to provide for a good outcome for the patient.

PLEASE CALL KIESS KRAFT IF YOU ARE INTERESTED IN HAVING COPIES OF HIS ARTICLES AND PODCASTS.

Ask for Carol or Doug. We can send the information to you digitally or hard copies. Dr. Boksman's goal is to enrich the dental profession with this information.

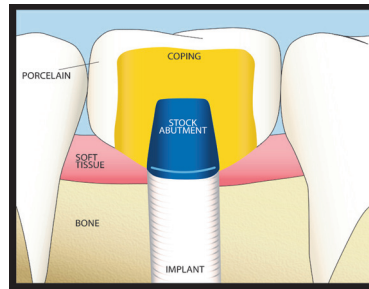
Dental Implants—Do we want a Stock Abutment or a CAD/CAM Custom Abut- ment? What's the difference?

Abutments are a required part of the implant restoration. Questions are asked about the difference between a stock abutment and the custom abutment, many of which are created using CAD/CAM technology.

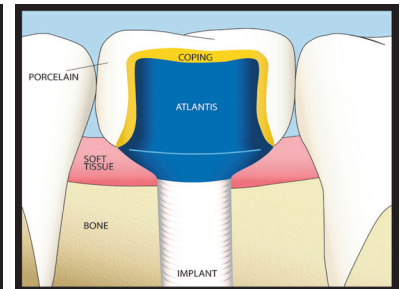
Stock abutments are manufactured in uniform size and shape, not in the shape of the tooth to be replaced. The same stock abutment is used whether it's a lateral or a molar.



Custom Abutments are created to the exact size, shape, angle height, and emergence profile. They can provide more anatomically correct design for the patient. Helps promote optimal esthetics and gingival health.



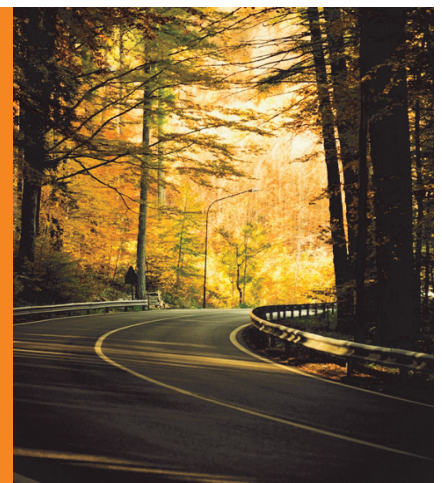
Stock Abutment (blue area)



Custom Abutment (blue area)

Using a stock abutment, the coping will require much more noble metal, increasing the price of the restoration. The custom CAD/CAM abutment helps reduce the amount of metal used, lowering metal costs and eliminating unsupported porcelain.

There's
nothing like
a road trip
down a
peaceful road
to clear the
mind...



Itero Scans—Kiess Kraft Dental Lab Now Accepts Cadent iTero scans!

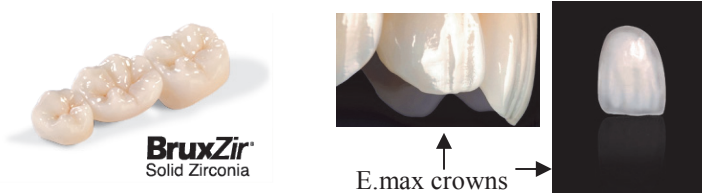
Send your Cadent iTero scans to Kiess Kraft Dental Lab. We have recently partnered with iTero to be able to accept scans of your impressions. Enjoy the precision of the crowns received from digital impressions! For more information, please contact Chris Miller at Kiess Kraft.



All Ceramic Crowns—Are they handled or seated differently than a PFM?

Why have BruxZir® and e.max® been so successful?

Working with and seating an all-ceramic monolithic crown can have a few differences from PFMs. One thing to keep in mind when seating an all-ceramic crown such as BruxZir or e.max is that the crown should not be adjusted on the interior portion of the crown. Doing so may weaken the crown. It is best to adjust any discrepancies on the prepped area rather than the interior of the crown. Adjusting or grinding on an all-ceramic crown without adequate irrigation can cause overheating, creating micro-cracks in the material.



BruxZir and e.max crowns are monolithic materials (have no porcelain overlay) - BruxZir is solid zirconia for the strongest crown available. E.max is a lithium disilicate material (comp. in esthetics to Empress), strong but also is more esthetic than BruxZir. Both of the crowns are very reasonably priced and provide a great value for your patients. **NO NEED TO WORRY ABOUT METAL COSTS.**

E.max is recommended for both anterior and posterior regions (single units and bridges only in premolar area) and BruxZir is recommended for posteriors (single units or bridges). Both can be used for implants

WORD SEARCH—

Holiday Fun and Chaos

S	L	M	F	U	N	E	M	O	N	D	T	V	M	F
A	N	B	A	Y	B	F	A	R	S	H	Y	A	K	Y
M	W	O	M	S	N	O	I	T	A	R	O	C	E	D
T	I	W	I	S	H	R	N	N	F	S	F	K	R	S
S	S	S	L	T	Z	A	K	I	T	E	R	O	O	M
I	H	S	Y	C	I	S	N	N	K	U	A	N	O	W
R	B	D	O	E	G	D	E	U	T	P	G	S	R	D
H	O	N	C	I	N	S	A	O	K	S	M	A	T	D
C	N	E	V	N	E	I	Y	R	H	K	P	U	E	S
G	E	I	F	R	R	S	W	C	T	P	A	M	P	U
S	N	R	P	S	T	U	F	F	I	N	G	H	H	N
G	E	F	S	T	F	I	G	N	L	I	G	H	T	S
V	D	E	A	X	X	K	G	S	E	L	D	N	A	C
F	T	K	R	C	S	G	A	M	E	S	U	C	V	I
U	V	X	R	T	I	U	L	Y	A	G	P	G	Y	E

BOWS	CANDLES	FAMILY
DECORATIONS	CHRISTMAS	FEASTS
TRADITIONS	THANKSGIVING	MENU
WRAPPING	HANUKKAH	LIGHTS
WISHBONE	PRESENTS	FOOD
TURKEY	PUMPKIN	TOYS
STUFFING	FRIENDS	WINE
GAMES	TREES	SONGS
		GIFTS

Important Products and Processes That are Easy to Forget About (But We Shouldn't!!)

Call us today if you would like information about any of the following:

- **Sparkle Dent Denture Cleaner**—about the best you or your patients will find anywhere!
- **Kleen Shield**—the process that seals and protects the patient's denture from stains; guaranteed for 5 years (guess if we used this, would not need the Sparkle Dent...)
- **Spare Denture Technique**—how often does a patient say "I can't give up my denture even though it's broken". We can make a duplicate at the time we create a denture.
- **Clasp Adjusters**—We have them, you need them! For adjusting the metal clasps on partials
- **Twin Denture Technique and Replacement Denture Technique**—Call for the info!!!

"News You Can Use" Inside:

- New "Complete Pricing" for
removables and Implants
- Articles on Impressioning from
Dr. Boksmann
- Stock vs CAD/CAM Custom Implant
Abutments? What's the difference?
- Ceramic Crowns

The pilgrims always seemed to enjoy corn, so we may as well too, just prepared a little differently....!

Scalloped Corn Bake:

- 1/2 cup chopped green pepper
- 1/4 cup chopped onion
- 5 TBSP butter, divided
- 2 cups soft bread crumbs
- 2 cans (8½ oz each) cream style corn
- 1 can (11 oz) whole kernel corn, drained
- 2 eggs, slightly beaten
- 1/4 c dry bread crumbs

In a large skillet, sauté green pepper and onion in 4 tablespoon of butter. Stir in the soft bread crumbs, corn and eggs. Transfer to a greased 8 inch square baking dish.

Melt the remaining butter, toss with dry bread crumbs and sprinkle over the casserole. Bake uncovered at 350° for 25 to 30 minutes til hot. ENJOY!!!



Here's the dining room all set for the relatives during the holidays! Actually, it is the restaurant George Washington ate at in Alexandria, VA. It is called Gadsby's Tavern and is still a restaurant today.